

<https://doi.org/10.30895/2312-7821-2024-12-3-f2>

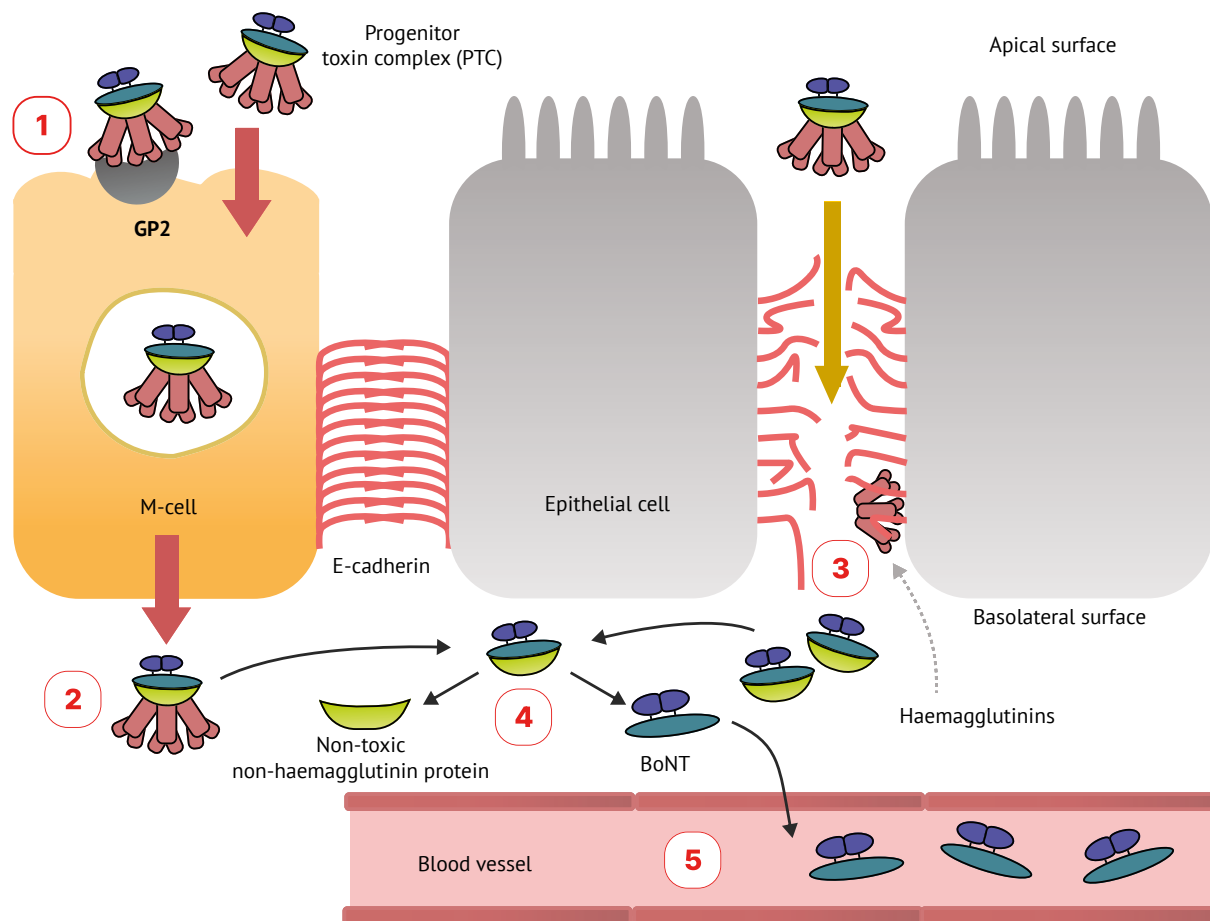


Fig. 2. Mechanism of intestinal absorption of botulinum neurotoxin (BoNT) type A complex: (1) A progenitor toxin complex (PTC) binds to glycoprotein 2 (GP2) expressed on M-cells. (2) The PTC crosses intestinal M-cell epithelial barriers by transcytosis. (3) Haemagglutinins bind to E-cadherin and disrupt adherens junctions between enterocytes. (4) The PTC dissociates to release BoNT in the extracellular region. (5) The released BoNT enters the blood stream